

# Traffic Impacts

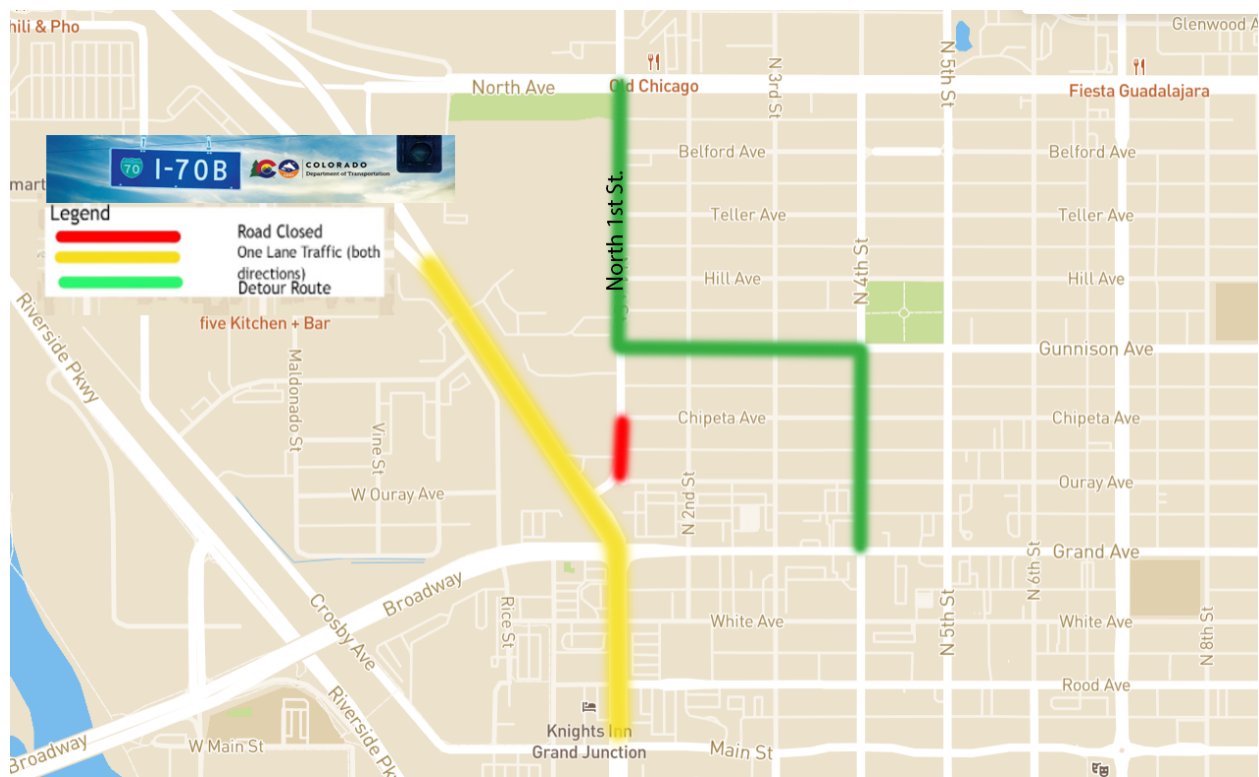
## Week of August 9-13, 2021



Crews have moved the installation of the temporary roundabout to Wednesday, August 11 from 7:00 p.m.-7:00 a.m. to allow work to begin on Phase 2. The installation of the roundabout will be at night. The temporary roundabout will be located at the southwest corner of the intersection and will allow traffic to continue to flow through the intersection work zone as the project continues.

On Wednesday, Aug. 11 an extended closure of North 1st St. will begin between I-70B and Chipeta Ave. Access to businesses on North 1st St. will remain open. The

following preferred alternate route for access to North 1st St. is from North Ave., and a detour will be in place from Gunnison St. to 4th St. back to Grand Ave.



In the second phase of the project, work will include: traffic signal replacement, continued construction on the realignment of the intersection, new curb and gutter, sidewalks, ADA ramps and new lighting in the center medians and concrete surface treatments.

The project team has developed several printable pdf flyers with information about the pedestrian and cyclists preferred alternate route, the North 1st St. detour and information for commercial vehicles. Please see the link below:

<https://drive.google.com/drive/folders/1m0d67hLJys-RBVkvCBnRlzmjQAeYitO?usp=sharing>

**Traffic Impacts**

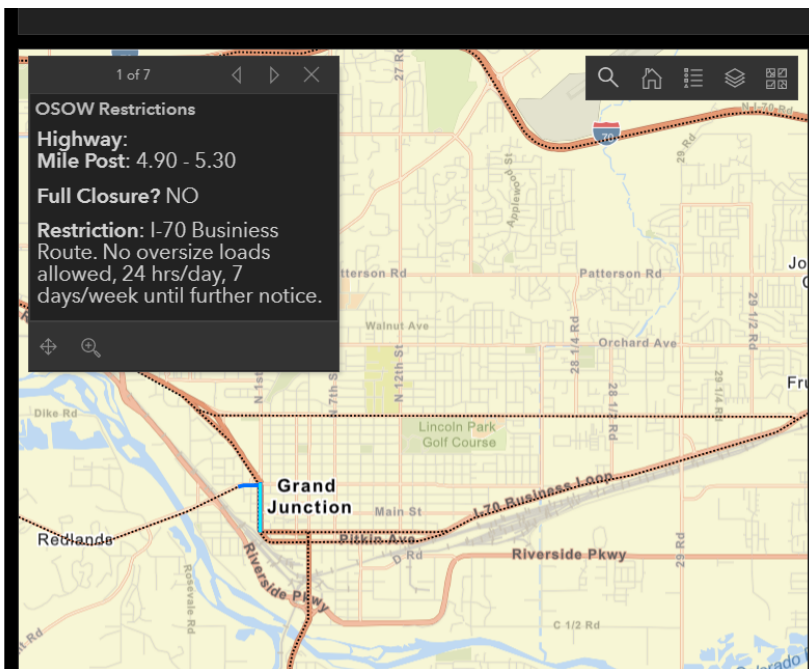
I-70 B from Mulberry St. to Main St. will continue as one lane in each direction, 24-hours a day/seven days a week.

Access to the Grand Central shopping center continues to be the southern entrance on the CO 340 side of the shopping center. Business access open and detour signs are posted.

### Commercial Vehicle Access

Due to the radius of the temporary roundabout design, commercial vehicle traffic is limited in passing through the work zone.

- No oversize or permitted loads
- 40 foot length restriction
- 8'6" width restriction
- The preferred alternate route is North Ave. in order to keep CMV and freight traffic on the state highway system. For more information please visit: <https://sites.google.com/state.co.us/cotriporgfreight/restrictions-maps>
- For permitting questions for the City of Grand Junction please visit: <https://www.gjcity.org/276/Truck-Permits>



### Stay Informed and Connect with the Project

Project information is available at:

- Project website: [www.codot.gov/projects/i-70-b-1st-street-and-grand-avenue](http://www.codot.gov/projects/i-70-b-1st-street-and-grand-avenue)
- Project information hotline: 970-309-1865
- Project email: [I70B1stGrand@gmail.com](mailto:I70B1stGrand@gmail.com)